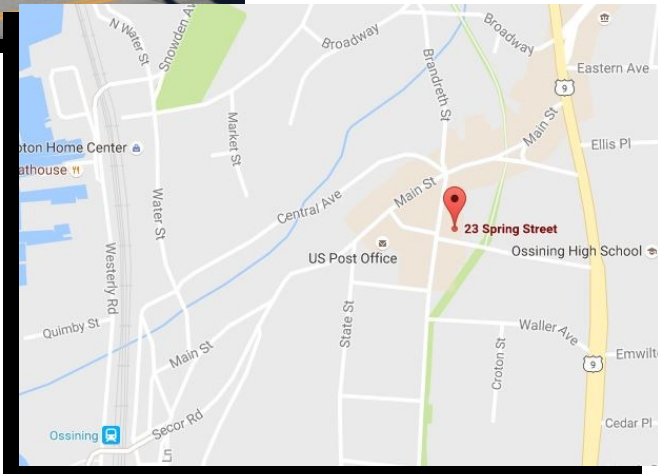




# LIPTAK

Commercial Realty  
and EMG Management

## 23-25 Spring Street Ossining, NY 10562



**Thomas J. Liptak**

Licensed Real Estate Broker

**For More Information Contact  
Liptak Commercial Realty  
and EMG Management**

*Specializing in New York real estate  
and property management*

## OSSINING ~ PERFECT LOCATION ~ WESTCHESTER COUNTY

### Building Features:

#### **Perfect Medical/Professional Office Space**

Multiple suites of various sizes available ~ Great downtown professional office space with close proximity to train, post office and banks~ One block from Court House ~ Prime medical space, close to Phelps Memorial Hospital Center ~ Municipal parking lot across the street ~ 24/7 Building Access

### Available Space: (Floor plans on 2nd page)

#### **2,943 SF—Suite 201**

Bright 2<sup>nd</sup> fl. office suite. Eight oversized offices. Space can be divided. Includes kitchen, HVAC controlled by tenant. Electric included.

#### **543 SF—Suite 303**

Large bright 3<sup>rd</sup> fl. office suite with half walls for division. Room can be sub-divided for privacy. Electric included.

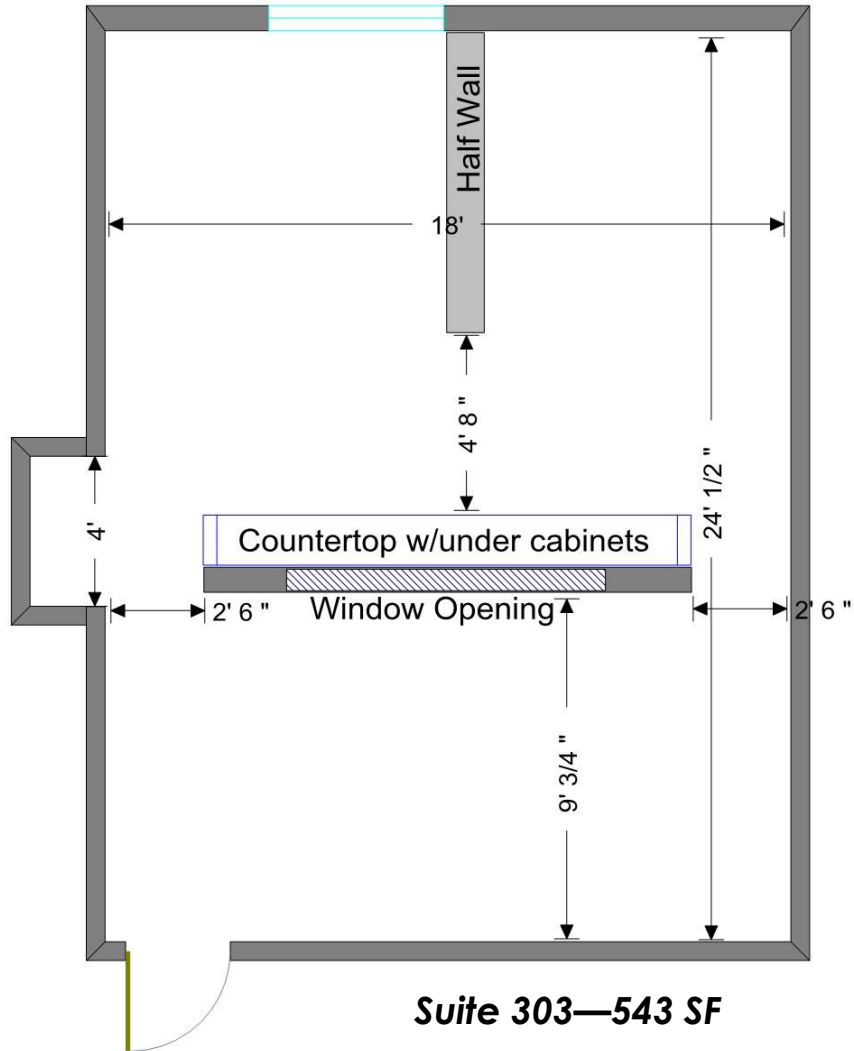
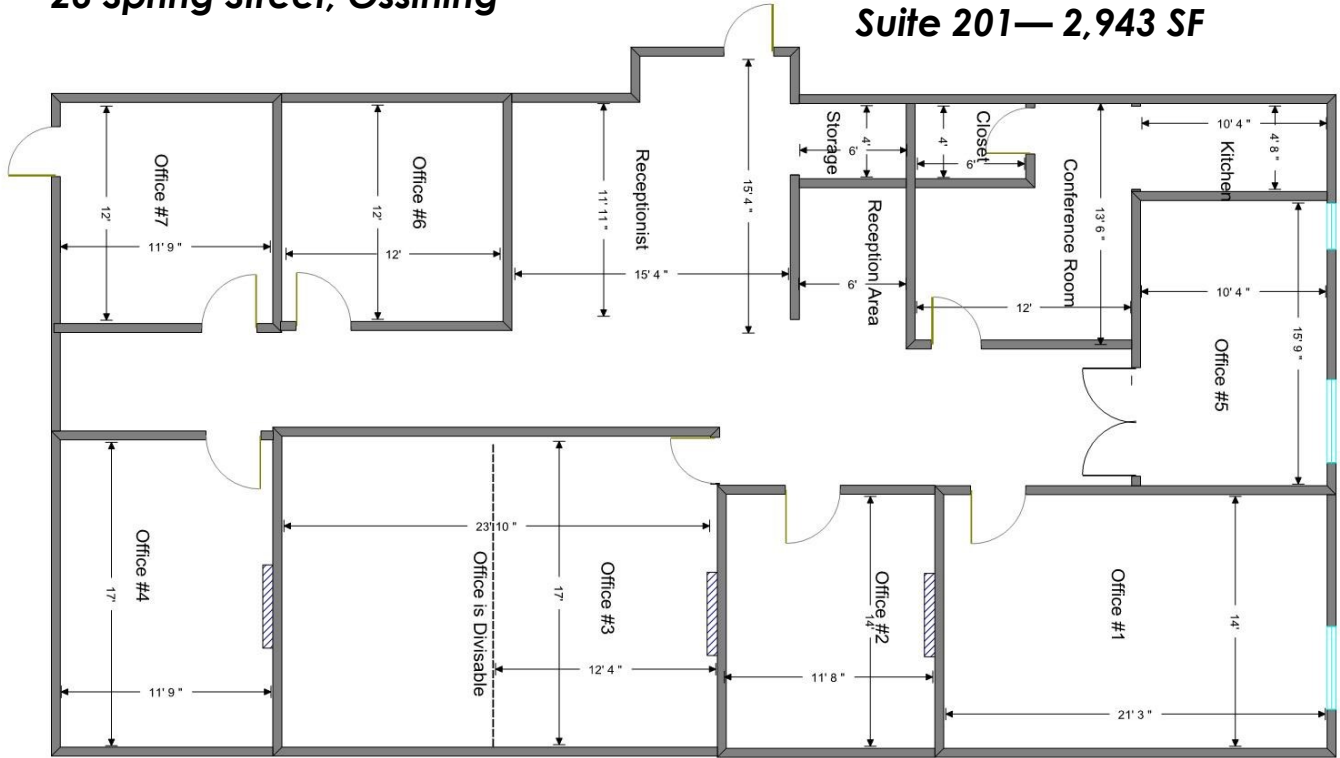
**(914) 946-4600**

**[www.LiptakEMG.com](http://www.LiptakEMG.com)**

All information furnished herein is from sources deemed reliable. No warranty or representation is made to the accuracy thereof and it is submitted subject to errors, omissions and/or changes, without notice.

23 Spring Street, Ossining

Suite 201—2,943 SF



Suite 303—543 SF

